

STRUCTURAL STEEL ENGINEERING

WE MAKE EASIER TO BUILD

Skylight Engineering Pvt Ltd

OUR VISION

Creating new dimensions in steel detailing industry using state of art technology and automation. Committed to fulfilling our customer requirement to their utmost delight and ensuring continuous partnership.

OUR MISSION

Committed to providing top-notch Quality service to the Steel Detailing industry, to achieve these adapting and inventing latest technology and automation.

CORE VALUES

Accountable, Credibility & Loyalty (ACL) are the three Core values that define Skylight Engineering culture in the way we do business with our Customers.



**A company built
to make steel
construction easier**

+2

years in business

+3000

man hour capacity

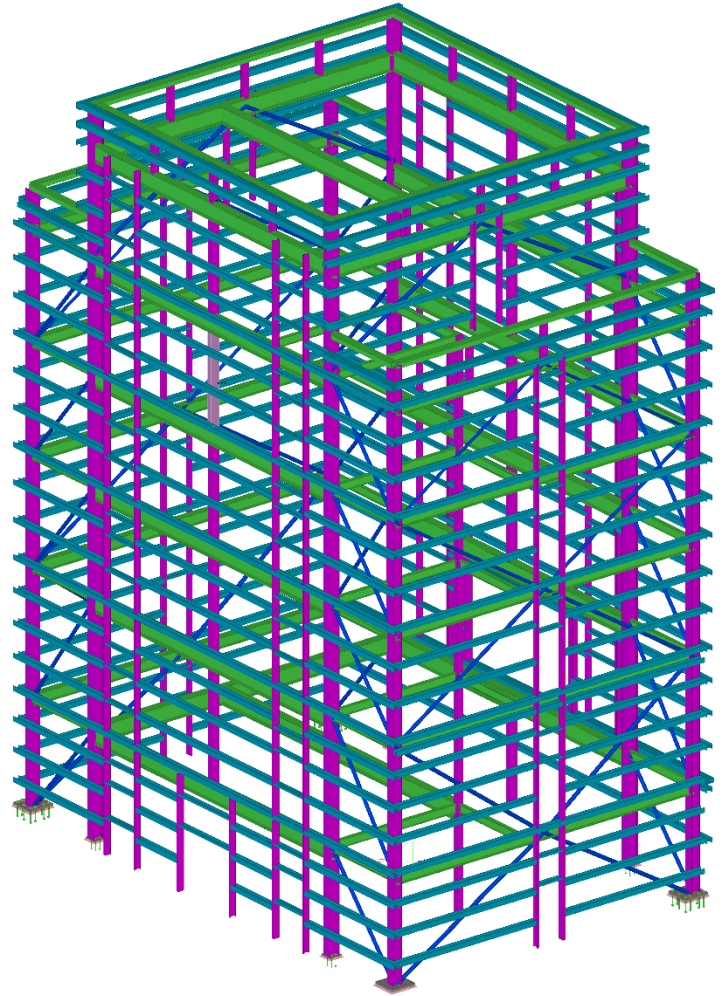
Skylight

About Us

Skylight engineering Pvt Ltd is a Structural steel & Miscellaneous steel detailing company. It started in 2018 by group of individuals with over 15 years of structural steel detailing and project management experience. Skylight offers varies of structural steel and miscellaneous steel detailing services for USA and Canada. These projects typically include schools, Warehouses, Retail Centers, Office Buildings, Power Plant Structures etc. Some of these are complex, prestigious, fast track and landmark projects. We successfully executed steel detailing for the commercial projects and industrial projects. Skylight core strength is its ability to collaborate very closely with customers and understand customer needs prior to execution.

Quality Policy

Our goal is to continue to be the top leading steel detailing provider. To ensure our clients receive the best quality steel detailing services. Our quality control system sets to assure accuracy and perform to standard detailing practices (AISC & NISC)



Skylight

**WE BUILD OUR
BUSINESS TO BE AN
OUTSTANDING
PROJECT PARTNER,
HELPING CLIENTS TO
SUCCEED WITH
STRUCTURAL STEEL
PROJECTS BY
PROVIDING FLEXIBLE,
CONSTRUCTIBLE AND
COST
EFFECTIVE SOLUTIONS**

Feature Benefits

01

OBTAIN CONSISTENT RESULTS

Established quality procedures, a robust document control system and an experienced team with local expertise make possible to maintain quality deliverables regardless of the project size.

02

KEEP YOUR PROJECTS ON TRACK

Open communication is vital for project success, we work hand in hand with our clients to provide immediate response to inquiries. To ensure projects stay on schedule, we constantly monitor the overall progress and take prompt actions to keep each task within its deadline.

03

CONTROL OVERHEAD COSTS

Control your overhead costs and keep your projects moving at an affordable fair price, we have the resources you need to adjust your production capacity as demand fluctuates.

04

GET FABRICATION AND ERECTION SAVINGS

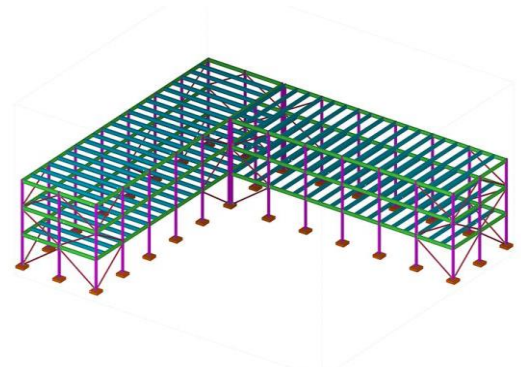
Selecting appropriate connections based on allowable loads, fabricator capabilities, labor intensity and suitable material have a significant impact on fabrication costs. We coordinate with Engineers and Fabricators to select cost effective connections with focus on Constructability and economy.

Skylight

Our Services

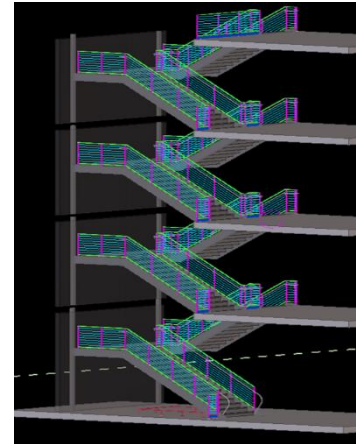
STRUCTURAL STEEL DETAILING

We are flexible to work with different requirements and project sizes, from small structures to large structures. Our understanding of the complexities of large structures and their interrelations with other disciplines allow us to manage the detailing process efficiently.



MISCELLANEOUS STEEL DETAILING

Working in close cooperation with clients to adhere to their standards, we can carry out the miscellaneous requirements of any project despite of their complexity. At Endproc we had designed and detailed a variety of staircases, ladders, mezzanines and handrails for commercial and industrial sectors.



PLATEWORK

We have the capabilities to detail light and heavy plate work structures such as Sign boards, hoppers, bins, chutes etc., for different industrial application.



CONNECTION DESIGN

We oversee the connection design process in a holistic manner, ensuring compliance with statutory codes and designing connections with careful consideration on economy and constructability. As Standard procedure we consider key factors as erection sequence, weld and bolt access, wrench clearances, fabricator capabilities and project owner standards.



Custom Deliverables



3d Model

3D STRUCTURAL MODEL

Conceptual and detailed data-rich 3D models to achieve smooth coordination with other disciplines and allow steel fabricators and erectors to visualize in advance any potential issue.



Fab. Drawings

FABRICATION DRAWINGS

Clearly presented drawings that show all information required to efficiently fabricate each steel part and all assemblies.



Erection Dwg

ERECTION DRAWINGS

Clear and accurate drawings showing tagged steel assemblies with necessary sections and elevations to clarify erection sequence.



CNC Files

CNC FILES

We can generate DXF and DSTV to automate fabrication processes as drilling, marking, and cutting.

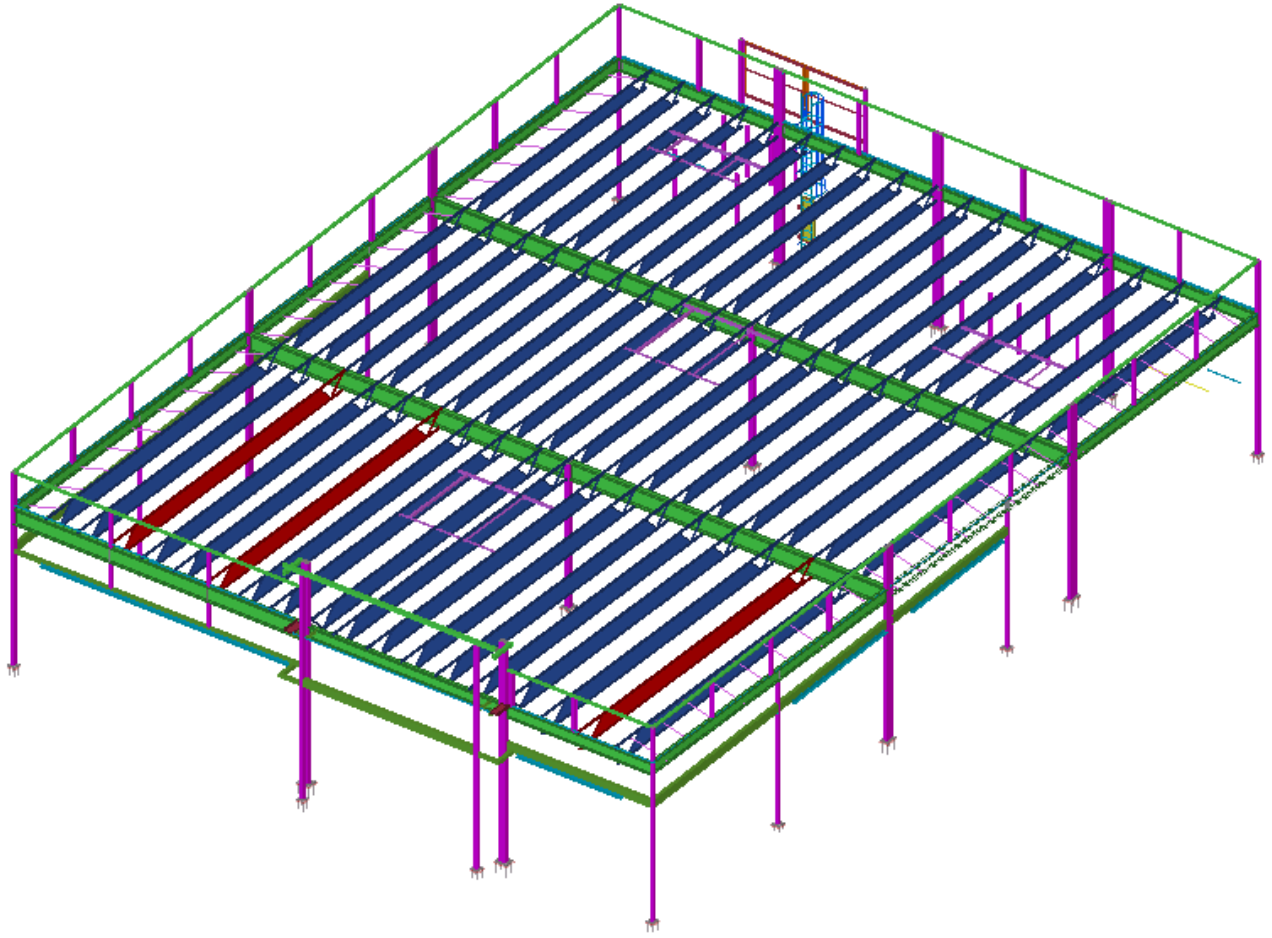


Custom Rpt

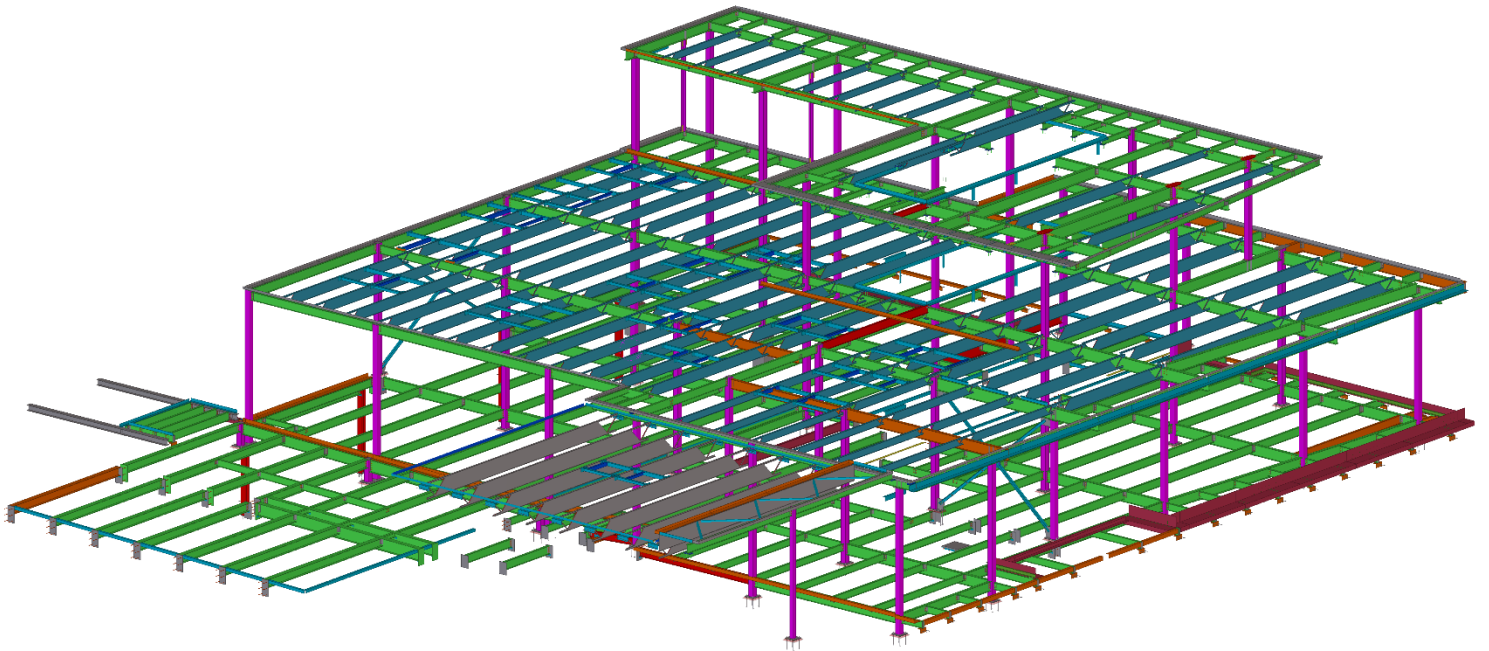
CUSTOM REPORTS

We can prepare specific reports to manage materials, parts, assemblies, bolts, shipping or another relevant information stored in the 3D model.

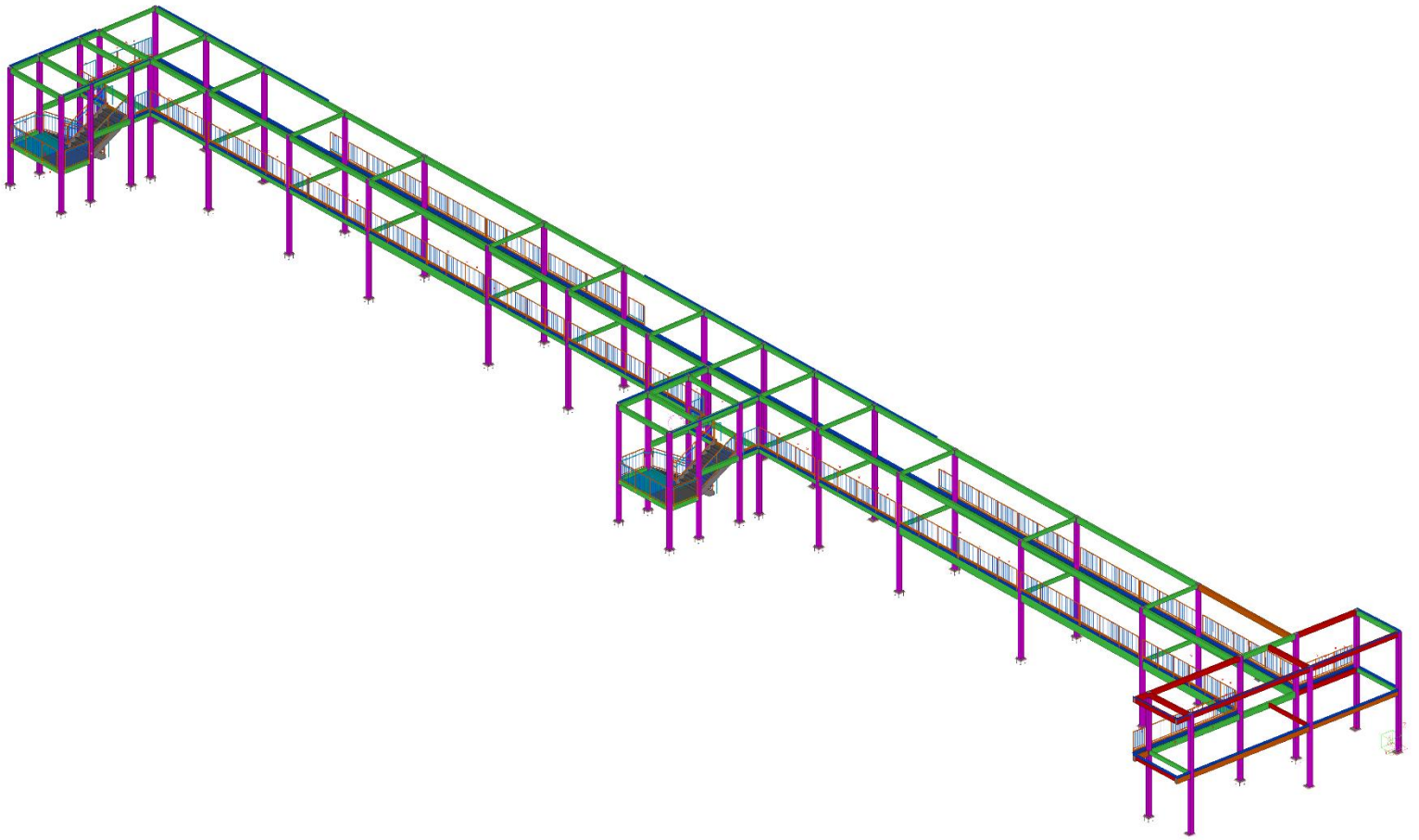
Some of Our Project Portfolio



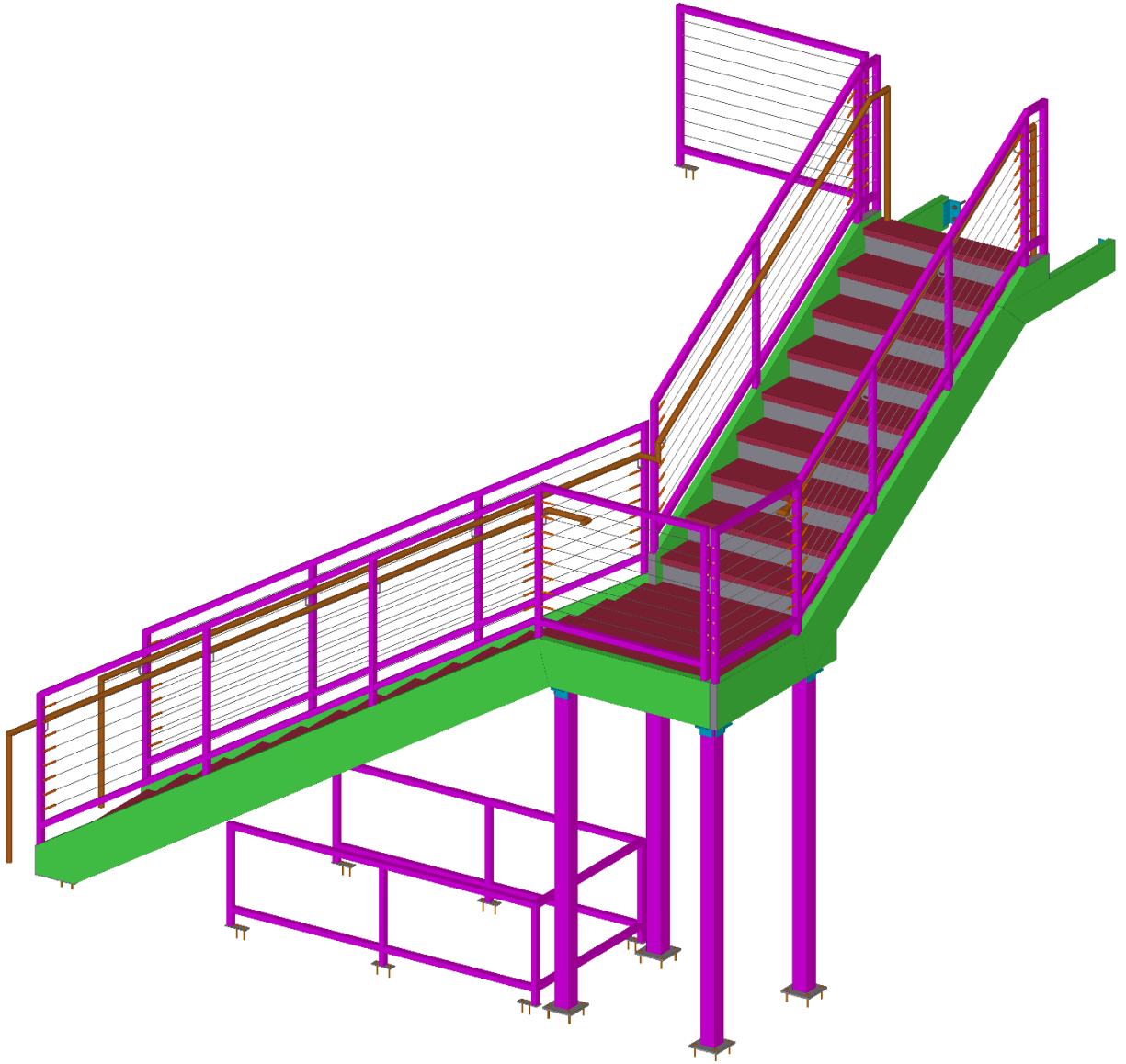
Skylight



Skylight



Skylight



Skylight

STANDARD CHECKPOINTS FROM START TO FINISH

With the aim to provide a consistent and repeatable process, we have developed written procedures to control design, detailing and deliverable through the project cycle.

We have also established standards for the management of project's documents including request for Information Formats.



QUOTING

- Review of content.
- Evaluate impact of missing information.
- Estimate of Hours.
- Preliminary Schedule.



JOB SETUP

- Assign resources.
- Establish Schedule.
- Coordination with client.
- Communication protocol.



MODELING

- Review of contract documents.
- Model main steel members.
- RFI management.
- Pre connection checking.
- Model all connections.



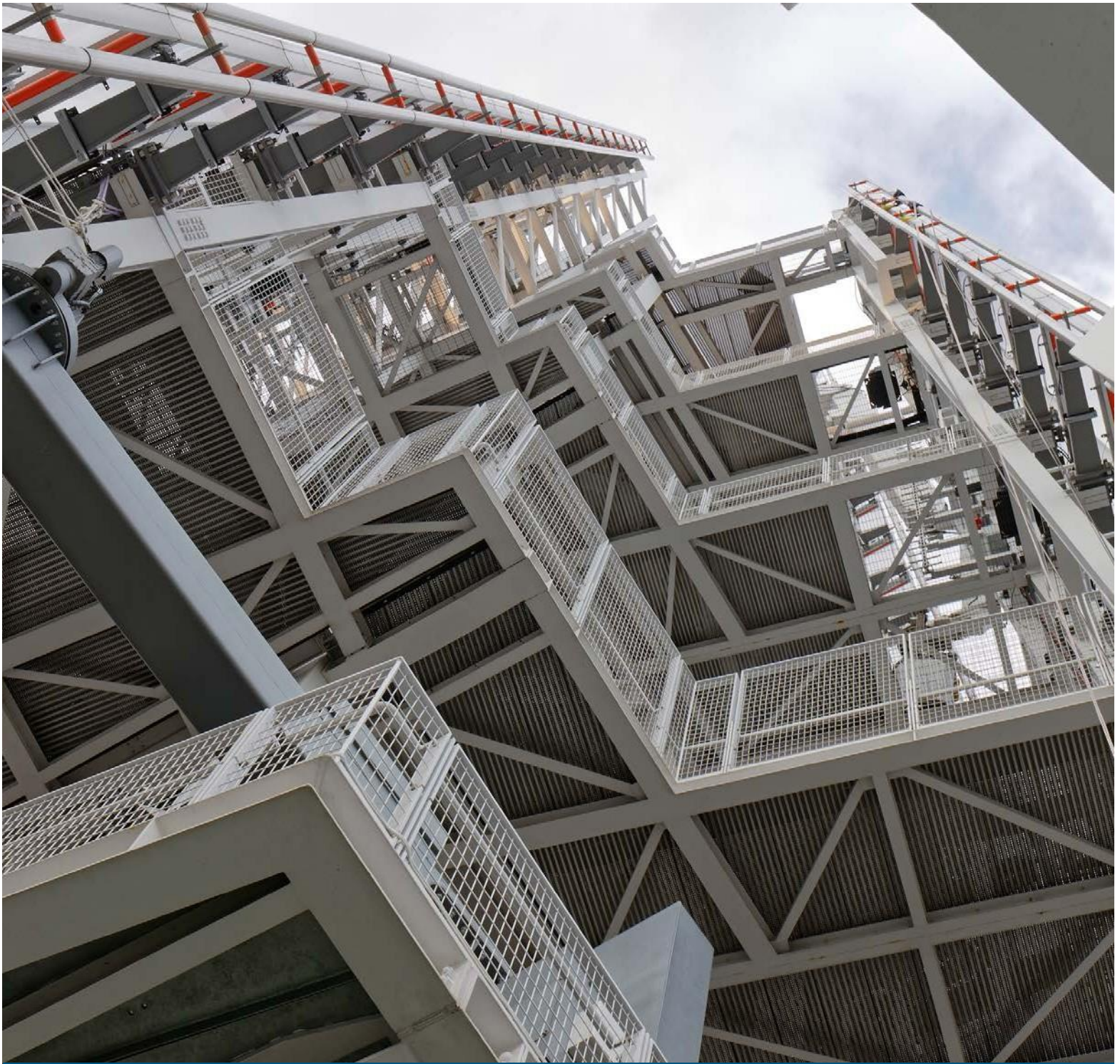
APPROVAL PACKAGE

- Create Erection drawings.
- Create Assembly drawings.
- Check drawings.
- Prepare Transmittal and release drawings.



FABRICATION PACKAGE

- Review for approval drawings for comments and changes.
- Notify client of cost and schedule changes if applicable.
- Create, check and release Fabrication.



Skylight Engineering Pvt Ltd

Contact Us

P : +1-512-861-1938

M: marketing@skylightengg.com
projects@skylightengg.com

W: www.skylightengg.com